

# Hydro Profile



Light Efficiency:

30 Lumen/Watt

Light Quality:

CRI: 71.5

Color Temperature:

7390 K

Output: 25747 lm

Peak: 66618 cd

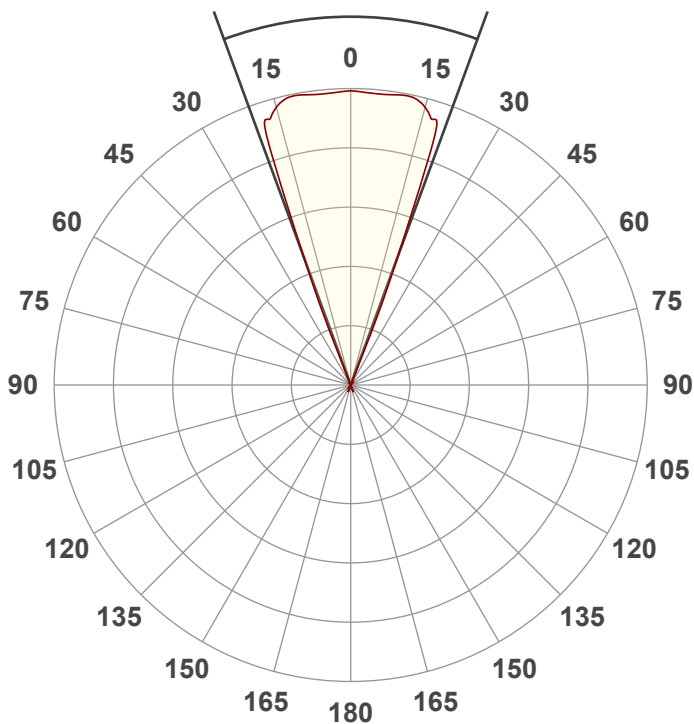
Power: 866 W

PF: 1.0



Beam Angle

40.2°



Test:

Zoom Out

Date:

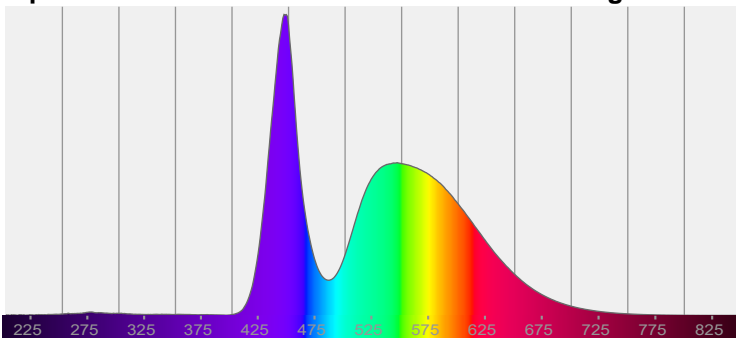
7/18/2022

Note:

CIE 1931  
x: 0.301  
y: 0.314

Spectra

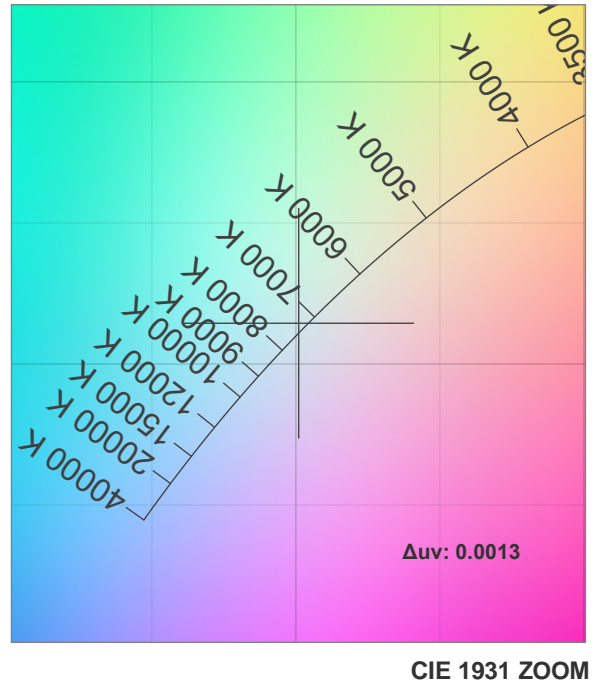
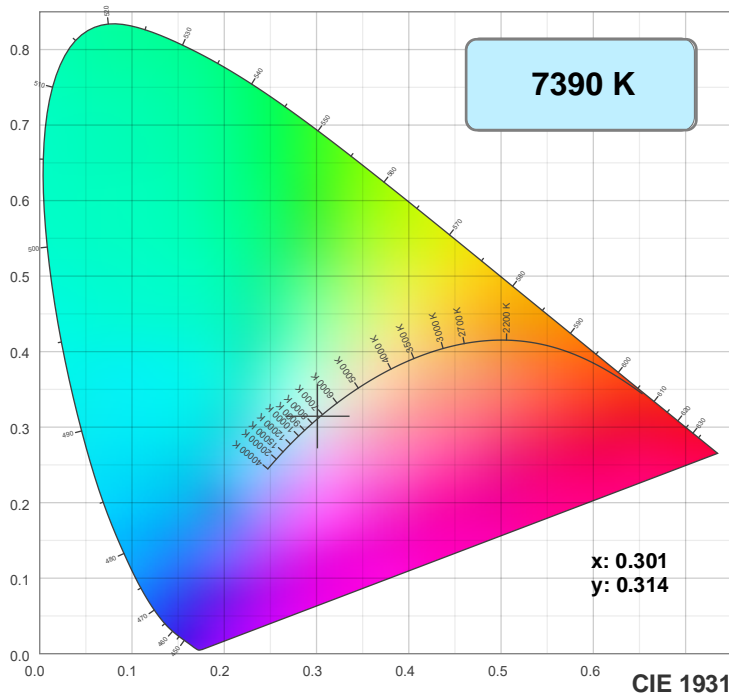
Dominant Wavelength: 474nm



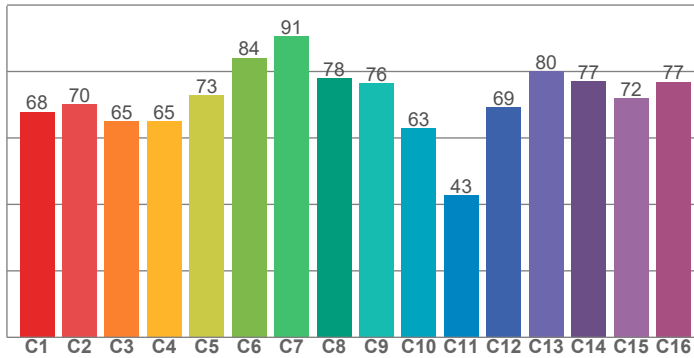
Power

Voltage: 119 V  
Current: 7.30 A  
Frequency: 0 Hz

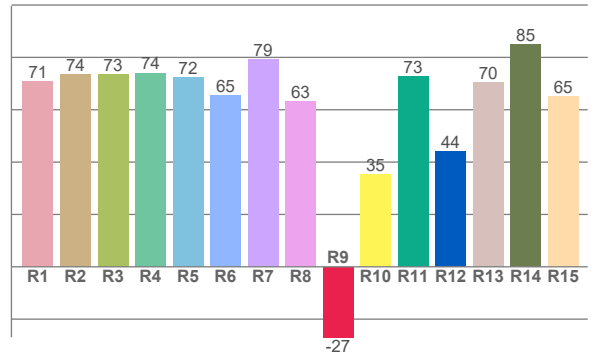
## Color Details



TM30: 71.6



CRI: 71.5 (R1-R8)



CRI R values, only R1-R8 are used to calculate final CRI value

R1	R2	R3	R4	R5	R6	R7	R8	R9	R10	R11	R12	R13	R14	R15
70.8	73.6	73.5	74.1	72.3	65.4	79.2	63.1	-26.9	35.4	72.9	44.2	70.4	84.9	65.2

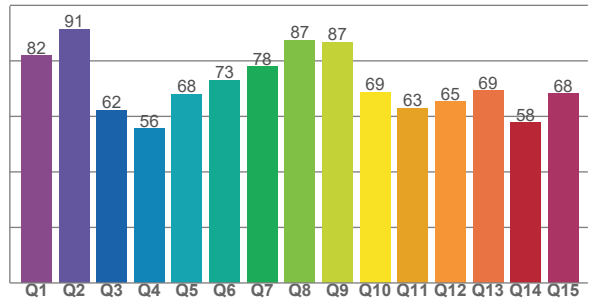
TM30 C values, 16 binned values out of total of 99 C values

C1	C2	C3	C4	C5	C6	C7	C8	C9	C10	C11	C12	C13	C14	C15	C16
67.8	70.2	64.9	64.9	72.8	84.1	90.6	77.9	76.5	62.9	42.7	69.1	80.1	76.9	71.9	76.9

CQS Q values

Q1	Q2	Q3	Q4	Q5	Q6	Q7	Q8	Q9	Q10	Q11	Q12	Q13	Q14	Q15
81.9	91.4	62.2	55.6	68.0	73.1	77.9	87.4	86.7	68.7	63.0	65.4	69.3	57.8	68.3

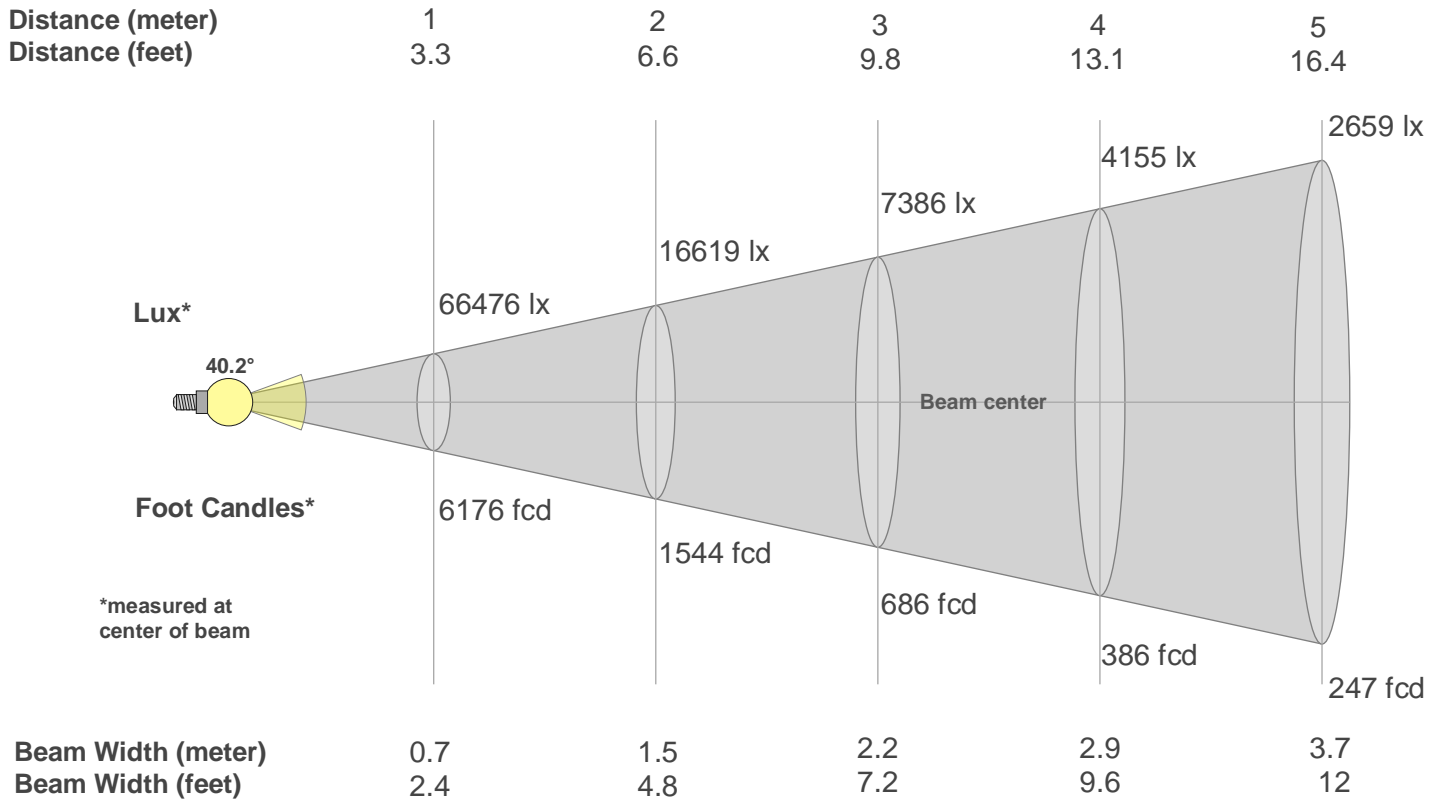
CQS: 69.8



## Color Parameters

Color Temperature	Color Rendering Index	Red Component	Color Fidelity	Color Gamut	Color Quality Scale	Color Coordinate CIE 1931	Color Coordinate CIE 1931	Color Coordinate	Color Coordinate	Color Deviation from Black Body
CCT	CRI	CRI R9	TM30 Rf	TM30 Rg	CQS	x	y	u	v	$\Delta uv$
7390 K	71.5	-26.9	71.6	94.5	69.8	0.301	0.314	0.195	0.306	0.0013

## Beam Details



Beam Intensities from 1-20m

m	1	2	3	4	5	6	7	8	9	10	11	12	13	14	15	16	17	18	19	20
ft	3.3	6.6	9.8	13.1	16.4	19.7	23	26.2	29.5	32.8	36.1	39.4	42.7	45.9	49.2	52.5	55.8	59.1	62.3	65.6
lx	66476	16619	7386	4155	2659	1847	1357	1039	821	665	549	462	393	339	295	260	230	205	184	166
fcd	6175.9	1544	686.2	386	247	171.6	126	96.5	76.2	61.8	51	42.9	36.5	31.5	27.4	24.1	21.4	19.1	17.1	15.4

Intensities in 0° C-plane

0°	2°	4°	6°	8°	10°	12°	14°	16°	18°	20°	22°	24°	26°	28°	30°	32°	34°	36°	38°
66.5K	66.3K	66.2K	66.1K	66.3K	66.5K	66.5K	65.7K	63.8K	60.3K	35.5K	8.2K	0.2K	0.1K	0.1K	0.1K	0.1K	0.1K	0.1K	0.1K
100%	100%	100%	99%	100%	100%	100%	99%	96%	91%	53%	12%	0%	0%	0%	0%	0%	0%	0%	0%

Intensities in 90° C-plane

0°	2°	4°	6°	8°	10°	12°	14°	16°	18°	20°	22°	24°	26°	28°	30°	32°	34°	36°	38°
66.5K	66.3K	66.2K	66.1K	66.3K	66.5K	66.5K	65.7K	63.8K	60.3K	35.5K	8.2K	0.2K	0.1K	0.1K	0.1K	0.1K	0.1K	0.1K	0.1K
100%	100%	100%	99%	100%	100%	100%	99%	96%	91%	53%	12%	0%	0%	0%	0%	0%	0%	0%	0%

Intensities in 180° C-plane

0°	2°	4°	6°	8°	10°	12°	14°	16°	18°	20°	22°	24°	26°	28°	30°	32°	34°	36°	38°
66.5K	66.3K	66.2K	66.1K	66.3K	66.5K	66.5K	65.7K	63.8K	60.3K	35.5K	8.2K	0.2K	0.1K	0.1K	0.1K	0.1K	0.1K	0.1K	0.1K
100%	100%	100%	99%	100%	100%	100%	99%	96%	91%	53%	12%	0%	0%	0%	0%	0%	0%	0%	0%

Intensities in 270° C-plane

0°	2°	4°	6°	8°	10°	12°	14°	16°	18°	20°	22°	24°	26°	28°	30°	32°	34°	36°	38°
66.5K	66.3K	66.2K	66.1K	66.3K	66.5K	66.5K	65.7K	63.8K	60.3K	35.5K	8.2K	0.2K	0.1K	0.1K	0.1K	0.1K	0.1K	0.1K	0.1K
100%	100%	100%	99%	100%	100%	100%	99%	96%	91%	53%	12%	0%	0%	0%	0%	0%	0%	0%	0%

Beam Angle 50%	Field Angle 10%	Cutoff Angle 2,5%	Intensity Ratio in 120° Cone	Intensity Ratio in 90° Cone
40.2°	44.3°	45.1°	99.3%	99.0%